

AdaptAlert™ Map Client for RF Activated Devices

AdaptAlert™ Map Client for RF Activated Devices with NWS

The Map Client for Radio Frequency (RF) Activated Devices from Warning Systems, Inc. (WSI) provides Emergency Response personnel with a visual layout showing icon representations of their fixed asset alert and notification devices (sirens, pagers, tone alert receivers) on a geographical map. The user friendly Graphical User Interface (GUI) makes it easy to perform specific selections and activate the devices as needed. The Map Client can also visually display National Weather Service (NWS) storm-based alerts with polygon layouts of the affected areas of warnings. The icons change color to indicate their activation status. The WSI AdaptAlert Map Client Software provides:

■ Versatility

Users can create customized maps by placing icons in any desired location based on the actual physical geographical position of the device (i.e. latitude/longitude coordinates). Both speaker sirens (which deliver audio messages) and wail sirens (which deliver variable alert tones) are represented by their own distinct icons on the Map GUI. Details of the devices locations can be viewed by zooming out to multi-city observation, or zooming in to a street-level view.

■ Selectability

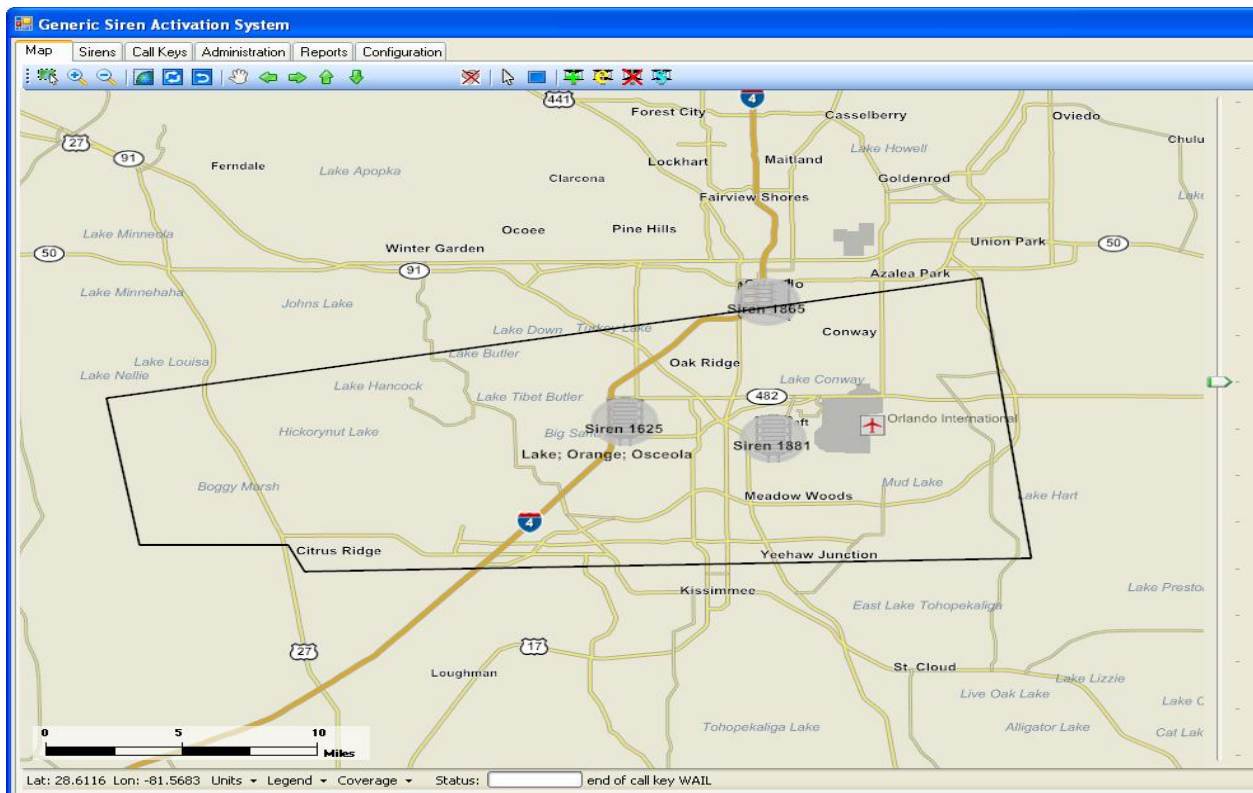
In addition to the NWS polygon area selection of devices, the Map Client enables the user to select devices individually, dynamically by a group, or on an all-call basis. This can be done graphically by simply clicking on the individual device icons on the map or by dragging the polygon tool to create a shape over the devices that need to be alerted. Alternately, the user can select individual devices from the list of names on a pull-down list or by selecting all devices in pre-defined zones.

■ Ease of Use

The user can easily select whichever type message is needed to be sent to any selection of devices if that device is set up to be capable of an audio message. The authorized user can select a static predefined message sequence and then select a single or multiple groups of devices to which that message will be sent. The user can also select prerecorded messages or type in custom text messages that are converted to audio (with the Text-to-Speech option). A prerecorded audio message can be uploaded as a wave (WAV) file, which can be stored for use.

■ Instant Status

If the device is capable of providing status back to the AdaptAlert System, this Instant Status is displayed on the Map Client screen. Moving the computer mouse cursor over the device icon causes the most recent known status of the device to be shown. This status information may include battery level, signal strength level and unauthorized entry alerts. All commands, messages and status information are logged in the System Log which is maintained for historical preservation and can be queried for pertinent details.



AdaptAlert™ Map Client for RF Activated Devices Features:

- When used with WSI Polygon Polling software, displays a polygon coverage area for NOAA Weather Service storms or USGS seismic event data
- Easy-to-use graphical user interface for visual display of RF device (e.g. siren) locations
- Versatile selection of activation devices graphically or from lists and individually, by zone, or all
- Quick selection of custom, static, predefined message sequences
- Message and Sequence Editor to define custom status message sequences
- Device locations (latitude/longitude) displayed in decimal degrees or in degrees/minutes/seconds
- Icons indicate device type and can optionally display estimated coverage area
- Automatically synchronizes with the WSI AdaptAlert RF Activation Controller system database
- Device configuration and message definitions can be saved to and downloaded from controller
- Report Query displays time-stamped message logs, within selected date periods
- Direct access to User & Group Administration maintained on the activation controller
- Embedded Text-to-Speech (TTS) audio generation (optional)
- TTS audio preview, phonetic training and regional dialects capability (optional)
- Requires installation on a computer running Microsoft .Net with Windows XP, Vista, or Win 7
- The computer on which the Map Client software is installed must be connected via Local Area Network to a WSI AdaptAlert RF Activation System



Warning Systems, Inc.
www.warningsystems.com
sales@warningsystems.com
 Phone: 877-218-9506
 Fax: 256-880-8785